



# TSU ESP

## T1/FT1 DSU/CSU with SNMP

### Product Features

- Single V.35 DTE interface
- Nx56 or Nx64 operation
- Embedded SNMP and Telnet
- Control port provides SLIP access to SNMP or VT100 terminal configuration
- Two ESP option slots
- 10BaseT Ethernet port available with ESP Ethernet Card
- Optional ESP DBU cards include 4-wire SW56, Single BRI and External DCE
- Automatic or manual dial backup
- Time of Day and Weekend dial backup lockout options
- Support for T-Watch PRO™ software for optional PC-based configuration
- Standard five-year warranty

The ADTRAN TSU ESP is a full-featured T1-FT1 Data Service Unit/Channel Service Unit (DSU/CSU) with an integral SNMP Agent and optional, modular Dial Backup (DBU) capabilities. It provides an interface between T1 or Fractional T1 service and the customer's Data Terminal Equipment (DTE). The TSU ESP provides access to traditional dedicated point-to-point T1 circuits as well as Frame Relay services.

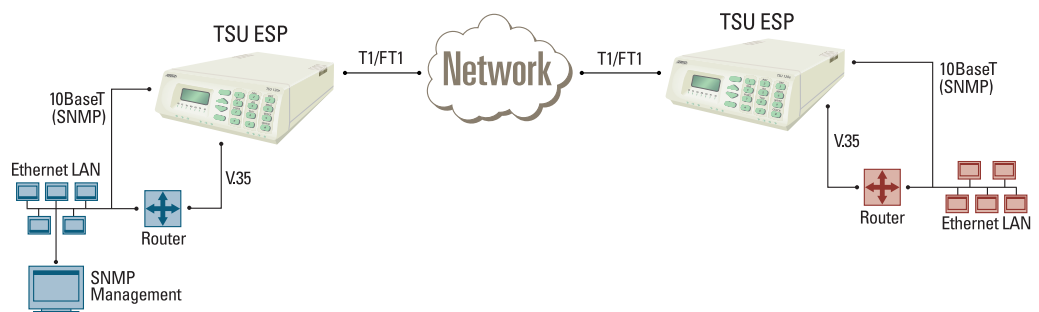
The TSU ESP supports synchronous data rates from 56 kbps to 1.536 Mbps at Nx56 or Nx64 kbps. A single V.35 physical interface provides a connection to the end user's DTE.

Embedded SNMP and Telnet are available through the integral SLIP or an optional 10BaseT Ethernet port when configured with the plug-in ESP Ethernet Card. Through the Management Information Base (MIB)-II standard and an ADTRAN-supplied enterprise MIB, the TSU ESP can be configured and monitored using standard SNMP network management programs such as HP OpenView®, Netview® and SunNet® Manager.

The Dial Backup capability of the TSU ESP allows for automatic switched backup in the event of a dedicated T1 line failure. The Dial Backup is accomplished through a family of

plug-in ESP DBU cards. Several versions of ESP DBU cards are available including 4-wire Switched 56, 2B+D ISDN, and External DCE. When a failure condition occurs on the T1/FT1, the DBU card uses the switched network (ISDN, 4-wire Switched 56) or DTR dialing (External DCE) to initiate a call to the remote end. The user can choose whether the unit automatically or manually reverts to the dedicated circuit when it is restored. Optional Weekend and Time of Day Dial Backup lockout options are provided in the TSU ESP DBU option menu.

The TSU ESP responds to standard loopback commands from the telephone company central office. In addition, the user has several built-in test capabilities. These include V.54 remote loopback and 511 BERT test patterns. Complete unit control and configuration are available through a 16-key pad and a two-line, 16 character LCD display. A VT100 terminal configuration and control mode is also available through the control port. Optional Windows®-based PC management is available through the T-Watch PRO™ software package. Flash download capability is implemented for installation of new features and future enhancements.





### ADTRAN, Inc.

Attn: Enterprise Networks  
901 Explorer Boulevard  
Huntsville, AL 35806

P.O. Box 140000  
Huntsville, AL 35814-4000

256 963-8000 voice  
256 963-8699 fax  
256 963-8200 fax back

**General Information**  
800 9ADTRAN  
info@adtran.com  
www.adtran.com

### Pre-Sales Technical Support

800 615-1176 toll-free  
application.engineer@adtran.com  
www.adtran.com/support

### Where to Buy

877 280-8416 toll-free  
channel.sales@adtran.com  
www.adtran.com/where2buy

### Post-Sales Technical Support

888 423-8726  
support@adtran.com  
www.adtran.com/support

### ACES Installation & Maintenance Service

888 874-ACES  
aces@adtran.com  
www.adtran.com/support

### International Inquiries

256 963 8000 voice  
256 963-6300 fax  
international@adtran.com  
www.adtran.com/international

### For the regional office nearest you, visit:

www.adtran.com/where2buy



I.S. EN ISO 9001  
ADTRAN is a  
ISO 9001 registered company.



TL 9000

ADTRAN is a  
TL 9000 registered company.

Printed in the U.S.A.  
61200169L1-8G June 2002

©2002 ADTRAN, Inc. All rights reserved.

# TSU ESP

## T1/FT1 DSU/CSU with SNMP

## Product Specifications

### Network Interface

- **Line Rate:** T1/FT1 (1.544 Mbps)

### Physical Interface

- **RJ-48C:** 8-pin modular

### Framing

- SF/SF8

### ESF Format

- AT&T 54016
- ANSI T1.403

### Line Code

- AMI/B8ZS

### Input Signal

- 0 to -36dB

### DSO Assignment

- Contiguous
- Alternating

### T1 Transmit Timing

- Loop timed
- Internal
- DTE

### DTE Interface

- **Bit Rate:** 56 kbps to 1.536 Mbps, Nx56 or Nx64 kbps (N=1 to 24)

### Electrical

- CCITT V.35

### Mechanical

- V.35 (Winchester Type 34 pin)

### SNMP & Telnet Integrated

- **SLIP Port:** Physical Connector RJ-48S

### ESP Slots

- Optional 10BaseT interface with ESP Ethernet module
- Optional dial backup with ESP Dial Backup modules

### Performance Monitor

- **Performance Data:** BPVs/CRCs, ES, SES, UAS, % AS, % EFSEC, Alarms, Errors

### Reports

- NI information stored for past 24 hours in 15 minute increments

### PRMS

- ANSI performance report messages (user selectable)

### Tests

- **Local:** Payload/line loopback, DTE loopback
- **Remote:** Payload/line loopback, V.54 (DTE) loopback
- CSU loopback

### Built-In Test Patterns

- 511 (active DS0s) with error insert available
- All 1s (all DS0s)
- All 0s (all DS0s)

### Agency Approvals

- FCC part 15, Class A, FCC Part 68, Industry Canada CS03, UL 1950, CUL

### Environment

#### Operating Temperature

- 0 to 50°C, (32 to 122°F)

#### Storage Temperature

- -20 to 70°C, (-4 to 158°F)

#### Relative Humidity

- Up to 95%, non-condensing

### Physical

- **Dimensions:** 2.4" H, 8" W, 10.4" D
- **Weight:** 4 lbs.
- **Power:** 115 vAC, 60 Hz, 5W

### Product Includes

- Two 8-pin to 8-pin modular cables, modular to female DB-9 adapter, and user manual

## Ordering Information

Equipment	Part #
TSU ESP	1200169L1
ESP Ethernet Card	1204005L1
ESP 4-wire Switched 56 DBU Card	1204001L1
ESP ISDN DBU Card	1204004L1
ESP External DCE DBU Card	1204006L1



TSU ESP Back

Specifications subject to change without notice. Specifications subject to change without notice. ADTRAN and T-Watch PRO are trademarks of ADTRAN, Inc. HP OpenView is a registered trademark of Hewlett Packard Company. NetView is a registered trademark of IBM Corporation. SunNet Manager is a registered trademark of Sun Microsystems, Inc. Windows is a registered trademark of Microsoft Corporation. All registered trademarks and trademarks mentioned in this publication are the property of their respective owners.